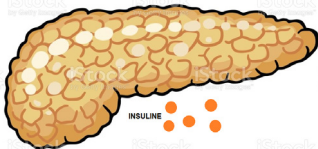


1



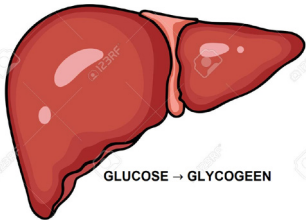
Eten

2



Alvleesklier  
produceert  
insuline

3



Lever zet  
glucose om  
in glycogeen

4



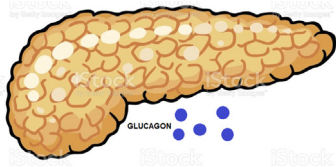
Glucose-  
waarde in  
bloed daalt

1



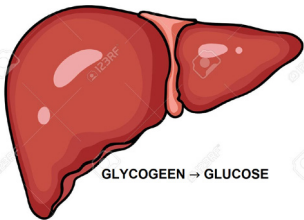
Sporten

2



Alvleesklier  
produceert  
glucagon

3



Lever zet  
glycogeen om  
in glucose

4



Glucose-  
waarde in  
bloed stijgt

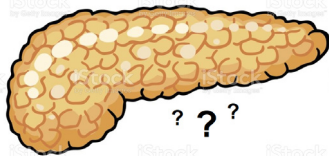


1



Diabetes  
type 1

2



Alvleesklier  
produceert  
te weinig  
insuline

3



Glucose  
wordt niet  
goed  
opgenomen

4



**Hyperglykemie**  
glucosewaarde  
van bloed te hoog

1



Eten met  
diabetes  
type 1

2



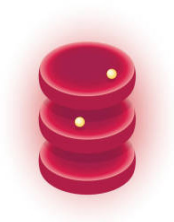
Glucose-  
waarde  
verkeerd  
berekend

3



Te veel  
insuline  
ingespoten

4



**Hypoglycemie**  
glucosewaarde  
van bloed te laag